

Amefa

Amefa for Retail



www.amefa.com

Amefa

Together we achieve more

At Amefa we are proud to say that we have more than 80 years of experience in setting the world's tables. With our four brands, **Amefa**, **Richardson Sheffield**, **Couzon** and **Medard de Noblat** we can offer you a wide variety of table top and kitchen products.

Amefa supplies its products to customers in over 50 countries worldwide.

At Amefa we believe that you learn every day, about cutlery, kitchen knives and table top, even we do. But we also have a life time of experience to guide you through our spectacular portfolio.



Index

Amefa retail catalogue

p.2

About Amefa

Amefa Corporate	2
Amefa the Brand	4
Projects	31
Contact data	32

p.4

Amefa Premiere Cutlery

1170 Metropole	5
1845 Cambridge	6
1860 Oxford	5
5280 Duke	6
8010 Jewel	7
8020 Cube	7
8060 Tokyo	8
9065 Aurora	8

p.10

Amefa 18/10 Cutlery

1026 Colorado	11
1120 Cuba	11
1316 Martin	12
1912 Allure	12
1923 Moderno	13
1924 Ventura	13
8410 Palmon	14
8420 Chopin	15
8440 Baguette	15

p.17

Amefa 18/0 Cutlery

1410 Austin	18
1570 Bologna	19
2360 Arctic	19
7480 Octo	18

p.22

Amefa Kids Cutlery

0026 Bear	21
4310 Teddy Bear	22
C638 Binta	22
8422 Footie	23
8422 Princess	23

p.24

Amefa Coloured Cutlery

2214 Eclat	25
------------	----

p.26

Steak Knives

2520 Royal Steak	27
7038 Chuletero	27
7000 Pizza	28
6755 Salt & Pepper mills	28

p.29

Amefa Kitchen Knives

0266 Stratus	30
8710 Praxos	30

The Amefa brand

Setting tables around the world since 1931.

Amefa has a strong international reputation and extensive expertise in manufacturing stainless steel products. We apply high quality standards to all our products to guarantee durability and lasting performance. The assurance of fine quality and attention to detail at every price level is synonymous to the Amefa brand.

Enjoy everyday life

Amefa offers a wide range of cutlery and kitchen products. Whether it is breakfast with family, dining with friends, or a festive barbecue in the garden, we have a suitable product for every occasion. Amefa makes the everyday pleasures of good food even more enjoyable.

The Amefa brand stands for:

– Quality – Style – Versatility – Expertise –

 **Amefa**
PREMIERE

Our finest selection of cutlery; Amefa Premiere:

Distinctive designs crafted from the highest quality 18/10 stainless steel and beautifully finished to the last detail. 18/10 stainless steel indicates 18% of Chromium and 10% of Nickel. A good combination of the advantage of Chrome (corrosion resistance) and the brightness of Nickel. 18/10 stainless steel is therefore very durable and keeps its shiny finish for a long time.

All our cutlery is dishwasher safe.

Metropole

1170

Gauge: 4.0 mm*

Material: 18/10 stainless steel



Based on striking urban architecture. Long slender lines with a sloping bottom of the handle.

Oxford

1860

Gauge: 3.5 mm*

Material: 18/10 stainless steel



With a subtle nod to tradition, Oxford echoes the elegant shapes of the past, but reinvents itself as beautifully contemporary design.

* thickness of the Table fork/spoon

Cambridge

1845

Gauge: 3.2 mm*

Material: 18/10 stainless steel



With graceful lines and delicate embossing that flow around each item, Cambridge is one of our most enduring designs.

Duke

5280

Gauge: 3.5 mm*

Material: 18/10 stainless steel



Decoration can be striking. Which is just the case with the highly decorated Duke design.

* thickness of the Table fork/spoon

Jewel

8010

Gauge: 3.0 mm*

Material: 18/10 stainless steel



Unique and outstanding, the Jewel pattern combines style and tradition and is beautifully finished with a 'diamond' decoration.

Cube

8020

Gauge: 4.5 mm*

Material: 18/10 stainless steel



Contemporary design with sleek, clean lines. The angular shape of the handle gives the Cube pattern a distinctive look.

* thickness of the Table fork/spoon

Tokyo

8060

Gauge 4.0 mm*

Material: 18/10 stainless steel



This distinctive design is a million miles away from tradition, with an unusual Asian inspired knife and quirky fork with five prongs.

Aurora

9065

Gauge 3.5 mm*

Material: 18/10 stainless steel



The subtle design and the elegant, slightly curved handles make this pattern to have an extraordinary appearance.

* thickness of the Table fork/spoon

Amefa Premiere packaging

	1170 Metropole	1845 Cambridge	1860 Oxford	5280 Duke	8010 Jewel	8020 Cube	8060 Tokyo	9065 Aurora
Gift box sets								
24 piece - 6 people	•	•	•	•	•	•	•	•
40 piece - 6 people	•	•	•	•			•	•
60 piece - 6 people	•	•	•	•			•	•
78 piece - 12 people - in cabinet	•	•						•
Hanging cards								
Table knife 2pc	•	•	•	•	•	•	•	•
Table fork 2pc	•	•	•	•	•	•	•	•
Table spoon 2pc	•	•	•	•	•	•	•	•
Dessert Knife 2pc	•	•	•	•	•	•	•	•
Dessert Fork 2pc	•	•	•	•	•	•	•	•
Dessert Spoon 2pc	•	•	•	•	•	•	•	•
Medium Teaspoon 4pc	•	•	•	•	•	•	•	•
Mocca Spoon 4pc	•	•	•	•	•	•	•	•
Cake Fork 4pc	•	•	•	•	•	•	•	•
Gift sets								
12 piece - 6 people - Fish set	•	•	•	•		•	•	•





Amefa

18/10 cutlery

A wide range of patterns with great diversity to suit every style. The designs vary from very classic and traditional to very contemporary. 18/10 stainless steel indicates 18% of Chromium and 10% of Nickel. A good combination of the advantage of Chrome (corrosion resistance) and the brightness of Nickel. 18/10 stainless steel is therefore very durable and keeps its shiny finish for a long time.

All our cutlery is dishwasher safe.

Colorado

1026

Gauge: 8.0 mm (forged)*

Material: 18/10 stainless steel



Style can be simple. The Colorado cutlery has a simple-hearted, elegant design. The Colorado is a heavy, forged pattern which gives it the luxurious look and feel it deserves.

Cuba

1120

Gauge: 6.0 mm (forged)*

Material: 18/10 stainless steel



The Cuba pattern has smooth and smart lines and a forged handle. This combination gives just that extra bit of style to your table setting.

Cutlery with a gauge over 4.0 mm is usually forged cutlery. In this process the piece is made individually by a molding process. Forged or drop-forged cutlery is heavier, denser and has smooth rounded edges. Forged cutlery is stainless as well. The forged piece is treated and sealed to stay smooth and untarnished.

* thickness of the Table fork/spoon

Martin

1316

Gauge: 3.0 mm*

Material: 18/10 stainless steel

Smooth without adornment, simple yet stylish. Martin is an ideal pattern for the modern table setting.



Allure

1912

Gauge: 2.5 mm*

Material: 18/10 stainless steel

An elegant design with strong lines. The remarkable shape of the top parts gives this pattern a striking contemporary appeal.



* thickness of the Table fork/spoon

Moderno

1923

Gauge: 2.5 mm*

Material: 18/10 stainless steel

*A strong contemporary feel
with masculine design cues.*



Ventura

1924

Gauge: 3.0 mm*

Material: 18/10 stainless steel

*This contemporary and
brushed design, with its
masculine handle, encap-
sulates strength.*



* thickness of the Table fork/spoon

Palmon

8410

Gauge: 2.5 mm*

Material: 18/10 stainless steel

Palmon has a sturdy appearance with subtle decoration. A design with a strong personality.



Did you know?

- Up until the 17th century most people only had spoons and knives. The Italians first introduced the fork at the end of the 16th century, where the rest of Europe adopted it much later.
- Fourchette or gaffel? Cuchillo or coltello? There's lots of languages spoken at our table. Amefa cutlery is sold in more than 50 countries worldwide.
- The first recorded use of the word cutlery was around 1297, on a tax return.



* thickness of the Table fork/spoon

Chopin

8420

Gauge: 2.5 mm*

Material: 18/10 stainless steel



Beautifully cut, Chopin is sleek, dynamic and like the best of modern design, ever so simple.

Baguette

8440

Gauge: 2.5 mm*

Material: 18/10 stainless steel



With its soft fluid lines, Baguette is one of those everlasting designs that can sit happily with modern or traditional style settings.

* thickness of the Table fork/spoon

Amefa 18/10 packaging

	1026 Colorado	1120 Cuba	1316 Martin	1912 Allure	1923 Moderno	1924 Ventura	8410 Palmon	8420 Chopin	8440 Baguette
Gift box sets									
16 piece - 4 people	•	•	•	•	•	•	•	•	•
24 piece - 6 people	•	•	•	•	•	•	•	•	•
40 piece - 6 people	•	•	•		•	•	•	•	•
60 piece - 6 people	•	•	•		•	•	•	•	•
78 piece - 12 people - in cabinet	•	•				•			•
Hanging cards									
Table knife 2pc	•	•	•	•	•	•	•	•	•
Table fork 2pc	•	•	•	•	•	•	•	•	•
Table spoon 2pc	•	•	•	•	•	•	•	•	•
Dessert Knife 2pc	•	•	•	•	•	•	•	•	•
Dessert Fork 2pc	•	•	•	•	•	•	•	•	•
Dessert Spoon 2pc	•	•	•	•	•	•	•	•	•
Medium Teaspoon 4pc	•*	•*	•	•	•	•	•	•	•
Mocca Spoon 4pc	•*	•*	•	•	•	•	•	•	•
Cake Fork 4pc	•*	•*	•	•	•	•	•	•	•
* per 2 on hanging card									
Gift sets									
12 piece - 6 people - Fish set	•	•		•	•	•	•		•
12 piece - 6 people - Steak set		•							
6 piece - Iced Teaspoon / Latte Macchiato set					•				•



Amefa

18/0 cutlery

Simple, subtle and elegant designs.

Amefa has cutlery patterns within every budget, all of these patterns are made from fine quality stainless steel and are dishwasher safe.

18/0 stainless steel indicates 18% Chromium which provides a high corrosion resistance.



Octo

7480

Gauge: 2.0 mm*

Material: 18/0 stainless steel



Great geometric lines and a real timeless feel. Octo is an iconic design with real character.

Austin

1410

Gauge: 2.5 mm*

Material: 18/0 stainless steel



Refined and elegant design with a contemporary feel, the Austin pattern has perfect lines and elegant shapes.

* thickness of the Table fork/spoon

Bologna

1570

Gauge: 2.0 mm*

Material: 18/0 stainless steel



The delicate lines and embossing around each piece give this pattern a traditional appearance.

Arctic

2360

Gauge: 2.0 mm*

Material: 18/0 stainless steel



Modern design for everyday use. The subtle influences of Scandinavian design give the Arctic pattern its unique character.

* thickness of the Table fork/spoon

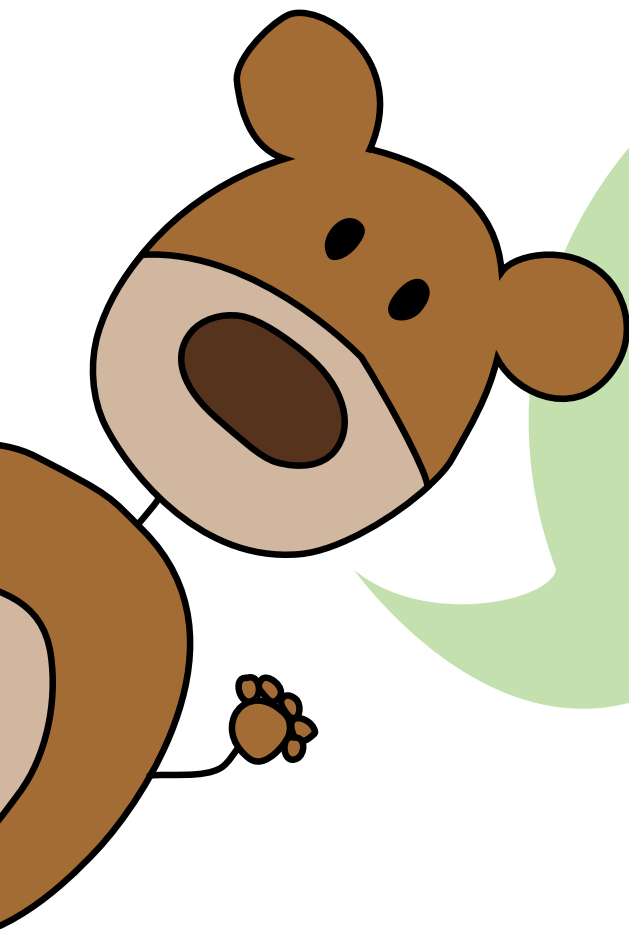
Amefa 18/0 packaging

	1410 Austin	1570 Bologna	2360 Arctic	7480 Octo
Gift box sets				
24 piece - 6 people	•	•	•	•
Hanging cards				
Medium Teaspoon 4pc	•	•	•	•
Mocca Spoon 4pc	•	•	•	•
Cake Fork 4pc	•	•	•	•
Gift sets				
6 piece - Iced Teaspoon / Latte Macchiato set	•	•		



Cutlery set content

	16 piece set	24 piece set	40 piece set	60 piece set	78 piece set
Table knife	4 x	6 x	6 x	6 x	12 x
Table fork	4 x	6 x	6 x	6 x	12 x
Table spoon	4 x	6 x	6 x	6 x	12 x
Dessert knife				6 x	12 x
Dessert fork				6 x	12 x
Dessert spoon				6 x	
Medium teaspoon	4 x	6 x	6 x	6 x	12 x
Mocca spoon			6 x	6 x	
Cake fork			6 x	6 x	
Gravy ladle			1 x	1 x	1 x
Vegetable spoon			1 x	2 x	2 x
Salad serving fork			1 x	1 x	1 x
Salad serving spoon			1 x	1 x	1 x
Cake server				1 x	1 x



Cutlery

that's just child's play

Little hands are quite different and it's not as simple as just scaling down our adult designs. Our ergonomically shaped pieces will help them get to grips with grown-up world of dining. After all it's never too early to get little ones to the table and educate them in a fun way about food. And this playful and fun cutlery will certainly appeal to our youngest customers.

Bear

0026

Gauge: 2.0 mm*

Material: 18/0 stainless steel



*A nice choice for all kids!
This set gives your kids confidence at the table. This size of cutlery fits perfect for kids between 2 and 4 years.*



* thickness of the Table fork/spoon

Teddy Bear

4310

Gauge: 2.5 mm*

Material: 18/10 stainless steel



Get your paws on one of our favourite designs. This 4-pc set is especially designed for young kids between the age of 4 to 6 years.



Binta

C638

Gauge: 2.5 mm*

Material: 18/10 stainless steel



It might be like feeding time at the zoo, but we know mums and little ones go bananas with this fun animal set. Good for kids between the age of 4 to 6 years.



* thickness of the Table fork/spoon

Footie

8422

Gauge: 2.0 mm*

Material: 18/0 stainless steel



Whilst your sportsmen-to-be concentrates on their foot-work, we'll lend a hand at the table with our Footie cutlery.



Princess

8422

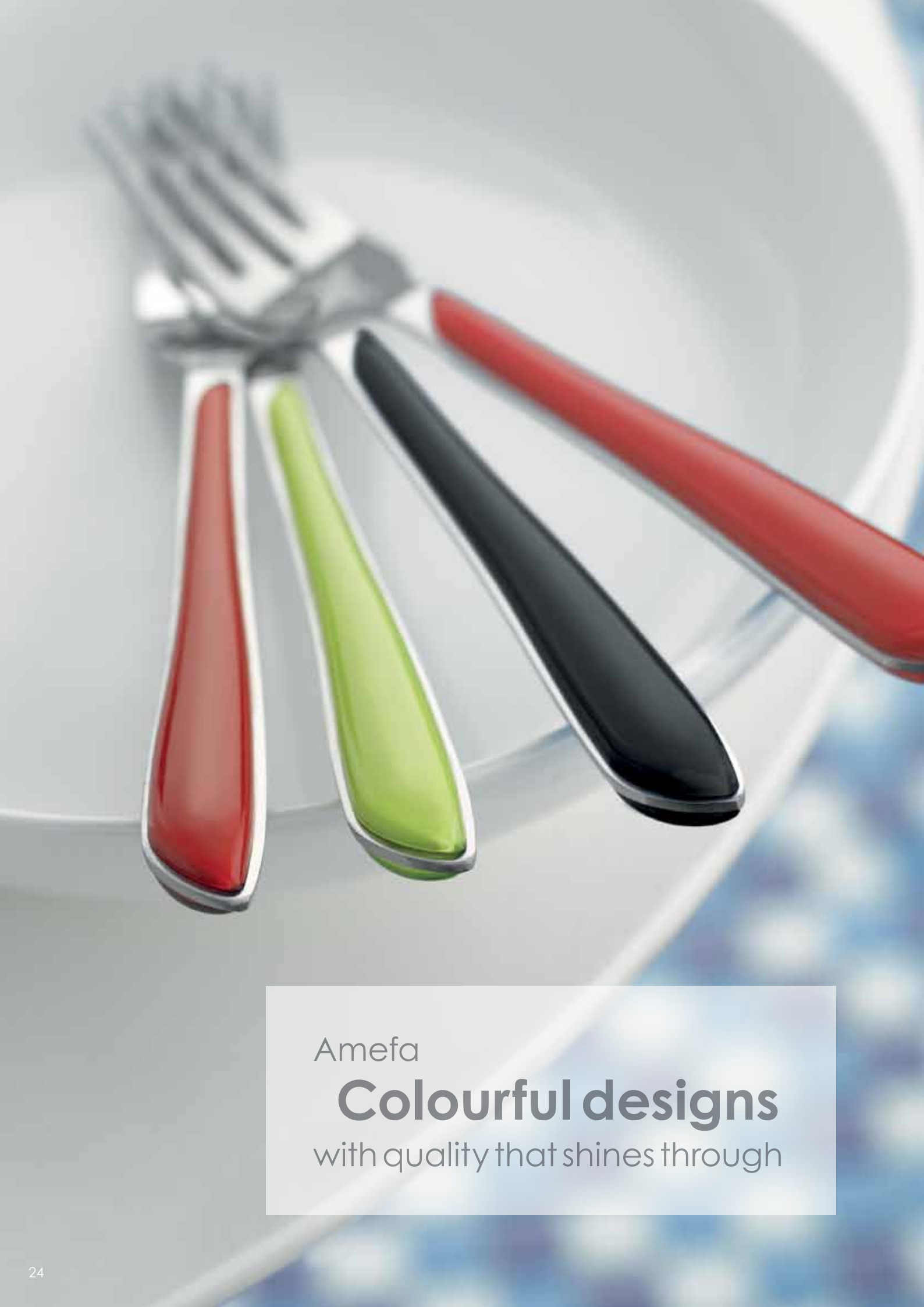
Gauge: 2.0 mm*

Material: 18/0 stainless steel



Treat your little ones like royalty with our Princess cutlery. Everything a little girl could wish for at the table.





Amefa

Colourful designs
with quality that shines through

Eclat

2214

Gauge: 2.0 mm*

Material: 18/0 stainless steel



The vibrant designs of Eclat bring together bold colour with everyday practicality.

Eclat

2214

Gauge: 2.0 mm*

Material: 18/0 stainless steel



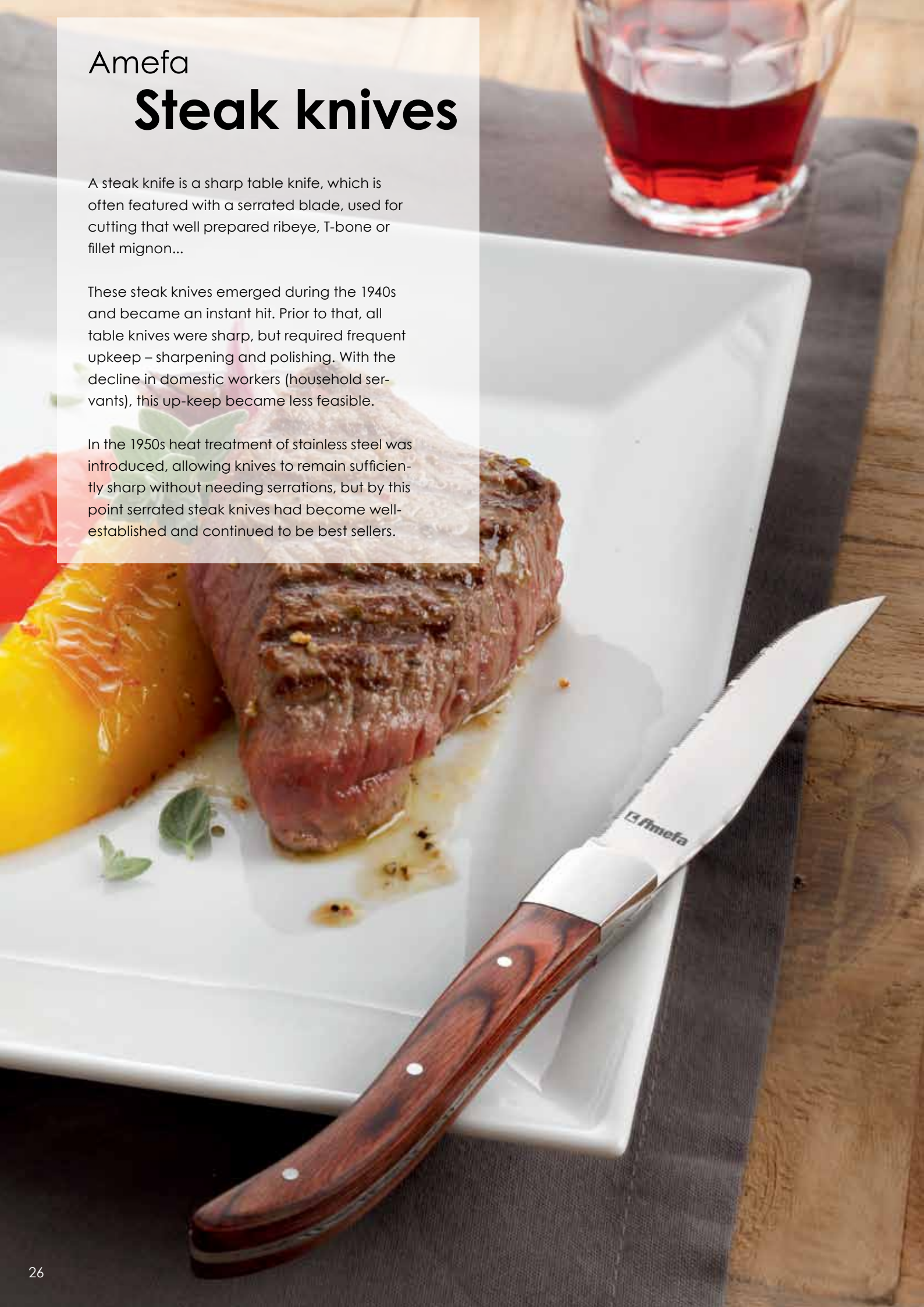
Everyone has their favorite colour. With this set of mixed coloured steak knives no-body will be disappointed.

Amefa Steak knives

A steak knife is a sharp table knife, which is often featured with a serrated blade, used for cutting that well prepared ribeye, T-bone or fillet mignon...

These steak knives emerged during the 1940s and became an instant hit. Prior to that, all table knives were sharp, but required frequent upkeep – sharpening and polishing. With the decline in domestic workers (household servants), this up-keep became less feasible.

In the 1950s heat treatment of stainless steel was introduced, allowing knives to remain sufficiently sharp without needing serrations, but by this point serrated steak knives had become well-established and continued to be best sellers.



Royal steak

2520



Supremely stylish. Everything people associate with luxury is reflected in these knives of Royal Steak. The polished wooden handle, the subdued design and gleaming high-quality stainless steel blade make this knife the ultimate steak knife. Together with the stylish wooden box it has an ultimate luxurious look.

Chuletero

7038

Gauge: 2.5 mm*



This elegant, full stainless steel steak set, gives your table setting just that little touch of extra style.

*thickness of the Steak fork

Pizza

7000



This traditional pizza/steak set is the true evergreen in steak cutlery.

All items are available in 6-pc sets.

Salt & Pepper mills

6755

Rubberwood – 35cm high



These XXL Salt and Pepper grinders, with ceramic mechanism, are a great addition to your kitchen and dining table.

Available in shiny red and black.



Amefa Kitchen knives

Culinary mastery requires excellent tools. That's why Amefa offers a wide range of kitchen knives which can effectively deal with all kinds of different tasks. The kitchen knives are available in various ranges from traditional to more contemporary designs. They are offered in pouches and in blocks with a logical and attractive color scheme on the packaging to make it easy to identify each individual pattern.

Stratus

0266

Hardness HRC 54 (+/- 2)



Traditional design.

The Stratus knife blade is manufactured from high quality martensitic stainless steel. It has a comfortable triple riveted handle which provides great comfort.

Single knives also available on hanging card.

Praxos

8710

Hardness HRC 54 (+/- 2)



Contemporary design.

The Praxos knife blade is manufactured from high quality martensitic stainless steel. The seamless stainless steel handle with ergonomic design provides great comfort.

Single knives are available on hanging card.

Thank you

for your interest in our brands and products!

Besides our standard assortment of products we always have interesting promotions available. These promotions change constantly, so please ask your contact person at Amefa for the current available promotions.

Some examples of promotional products are:

- (Large) Cutlery sets in promotional boxes
- (Colored) Kitchen knife sets
- Kitchen Utensils
- Steak knife sets
- Scissor sets



Projects

Whether it is stamping or etching your specific company details on our cutlery, client specific marking or other special projects;

At Amefa we can make this work.

Please ask your contact person for more information and possibilities.

